

Find your healthy place

With care designed to help you thrive





Go where you feel like your best self

We can help you get to your healthy place – no matter where it is. Care at Kaiser Permanente feels easier and faster, with the help of connected caregivers, more ways to get care, and support for the whole you. Welcome to care that fits your life.

NEW Prosper plan option in 2022: Lower premiums and predictable copays. See page 12 for details.

LEARN MORE ABOUT:

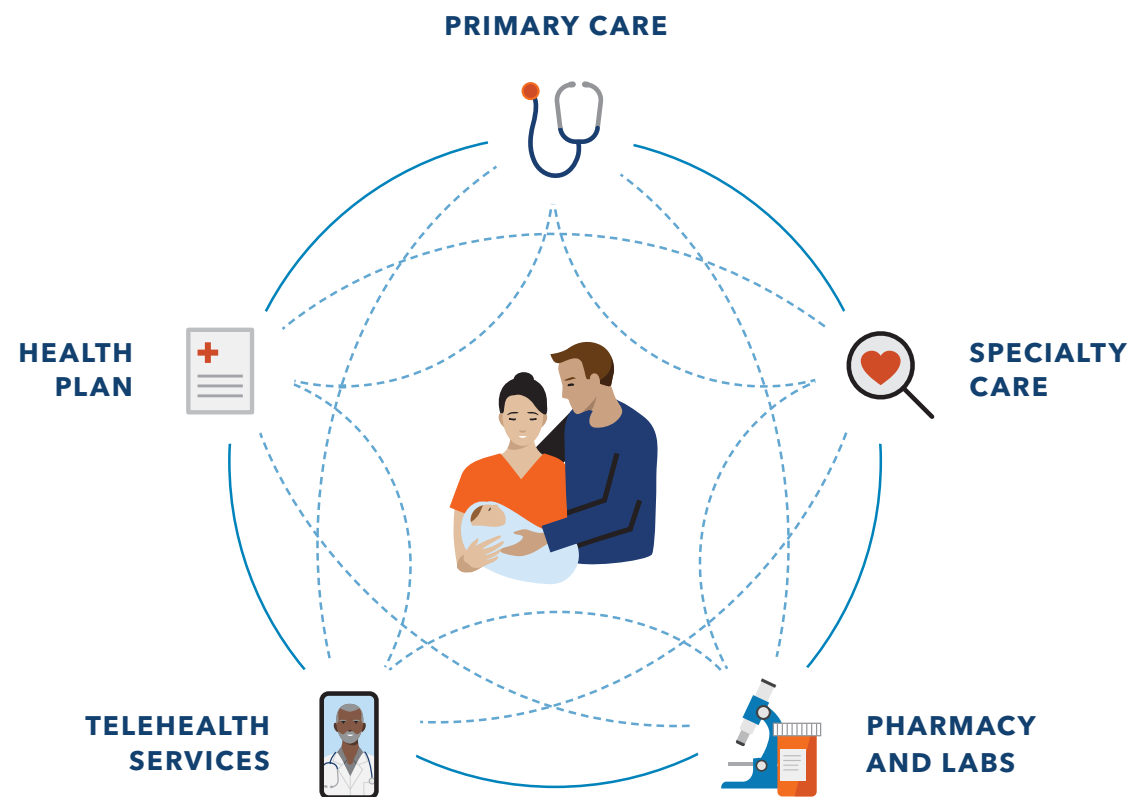
- Personalized care that’s easy to get..... 4
- Industry-leading quality 7
- Healthy resources..... 8
- Benefit highlights..... 9
- Plan options and 2022 benefits 11
- Here’s what you’ll pay..... 13
- Senior Advantage plans for FEHB members..... 14
- Quality vision and dental coverage..... 20
- Locations near you..... 22

Want to talk? We’re here to help.
A Kaiser Permanente enrollment specialist can answer your questions – like where to get care or what extra perks are included. Call us at **1-855-366-8994 (TTY 711)**, Monday through Friday, 7 a.m. to 5 p.m. Open Season hours: Monday through Friday, 6 a.m. to 7 p.m. Learn more at **kp.org/feds**.



Built to make your life easier

Kaiser Permanente combines care and coverage – which makes us different from your other health care options. Your doctors, hospitals, and health plan work together to make exceptional health care easy to get. That means you'll have peace of mind knowing care for your total health is there when and where you need it – from your doctor's office to your living room. To see what it's like to be a member, visit kp.org/myhealthyplace.

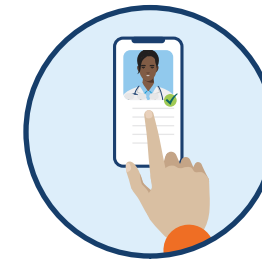


"I really appreciate the coordination of care. Every doctor and specialist can access my records, and I don't have to waste valuable time repeating medical histories."

–Lisa, Kaiser Permanente member

A better experience from the start

We guide you through each step of joining Kaiser Permanente, so you get the care you need without missing a beat.



Search profiles to find the right doctor

Our online doctor profiles let you browse the many doctors and locations in your area, even before you enroll. So you can join knowing you've found a doctor who fits your needs.



Transition your care seamlessly

Easily move prescriptions and schedule a visit with a doctor who's close to your home, work, or school. From day one, you'll have the support you need to help reach your health goals.



Connect to care online

After you enroll, create an account at kp.org or download the Kaiser Permanente app. Then manage your health on your schedule – whenever, wherever.

Health care doesn't have to be confusing

If you don't know an HMO from an HSA, you're not alone. But rest assured – we're here to make health care easier to understand. Get help learning the basics at kp.org/learnthebasics.



Convenient ways to get what you need

You've got more ways to get quality care than ever before, so it's easier to stay on top of your health.



Video or phone appointment

Schedule a face-to-face video visit or phone appointment with a Kaiser Permanente care team and any specialists you've been referred to.¹



In-person care

We offer same-day, next-day, after-hours, and weekend services at many of our locations.²



Email

Message your Kaiser Permanente doctor's office with nonurgent questions and get a reply usually within 2 business days.



Prescription delivery

Use the Kaiser Permanente app to fill prescriptions for delivery or same-day pickup.³



24/7 advice

Get on-demand support with 24/7 care advice by phone.



E-visit

Use our online symptom checker for certain conditions and get personalized care advice within a few hours.



Care away from home

You're covered for emergency care anywhere in the world. When you're not in a Kaiser Permanente area, get urgent care from any provider, including MinuteClinic[®] locations (in select CVS and Target stores) or Concentra[®] urgent care centers.



Care while traveling

You can get routine care at any Kaiser Permanente location in another region. You can also get outpatient continuing and outpatient follow-up care outside of Kaiser Permanente service areas through the FEHB travel benefit. If you get hurt or sick while traveling, we'll help you get care. We can also help you before you leave town by checking to see if you need a vaccination, refilling prescriptions, and more. Just call our 24/7 Away from Home Travel Line at **951-268-3900** or visit **kp.org/travel**.

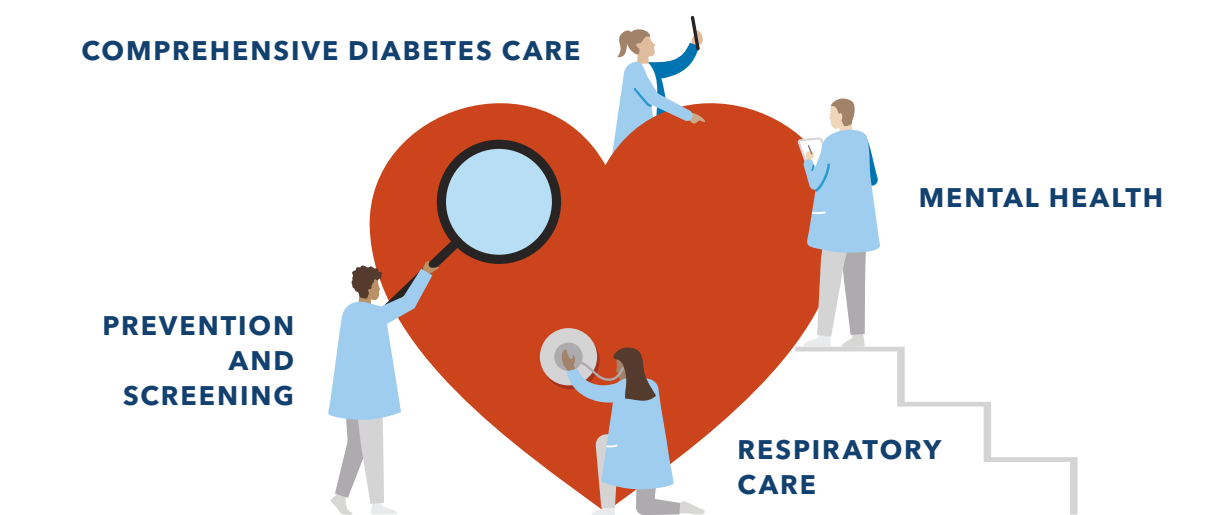
Telehealth is covered at no cost with most plans⁴

Telehealth has been part of how we deliver care for years, making it easy for our members to connect virtually to care during the pandemic. Our members had 15 million more telehealth care encounters in 2020 than in 2019.⁵

Industry-leading clinical quality

We're known for catching problems early with preventive care. But if your health needs serious attention, our industry-leading specialty care has you covered.

In 2020, Kaiser Permanente led the nation as the top performer in 34 effectiveness-of-care measures. The closest national competitor led in only 17.⁶



Specialty care when you need it

No matter your needs – mental health, maternity, cancer care, heart health, or another specialty – you'll have access to great doctors, advanced technology, and evidence-based care to help you recover quickly.

A comprehensive approach to care

With one of the largest multispecialty medical groups in the country, we can connect you with the right specialist who will create a personalized plan for your care. To learn how our specialists work together in a connected system, visit **kp.org/specialtycare**.

Support for ongoing conditions

If you have a condition like diabetes or heart disease, you're automatically enrolled in a disease management program for personal coaching and support. With a well-rounded approach backed by proven best practices and advanced technology, we'll help you get the care you need to continue living life to the fullest.

Healthy resources

Good health goes beyond the doctor's office. Explore some of the convenient resources available to members and choose the ones that fit your life.

Get the most out of your membership perks

Healthy rewards

Take simple steps to improve your well-being and earn up to \$150 to pay for qualified medical expenses.⁷ An FEHB subscriber and their enrolled spouse (18 and over) are eligible for the following rewards:



- \$50 for taking the Total Health Assessment, an online questionnaire that gives you a wellness action plan
- \$25 for completing a healthy lifestyle program, an online class to help you reach your health goals

Learn more and get started at kp.org/feds.

Help to quit smoking

If you use cigarettes, e-cigarettes, or other tobacco products, let us help you quit. You pay nothing for classes, coaching by phone, online programs, and prescriptions, including prescribed over-the-counter tobacco-cessation drugs. For more information, ask your doctor or visit kp.org/quitsmoking.



Complementary health and fitness programs⁸

Enjoy reduced rates on services that can help you stay healthy – like gym memberships⁹, acupuncture, massage therapy, and chiropractic care



Self-care apps^{8, 9}

Navigate mental and emotional challenges and help improve your sleep, mood, relationships, and more with the help of wellness apps, available at no cost to adult members. Visit kp.org/selfcareapps.



Healthy lifestyle programs^{8, 9}

Connect to better health with online programs to help you lose weight, reduce stress, and more – all at no cost. Learn more at kp.org/healthylifestyles.



Personal wellness coaching⁸

Get help reaching your health goals. Work one-on-one with a wellness coach by phone at no cost. Find out more at kp.org/wellnesscoach.



Benefit highlights

New for 2022



Prosper

- Lower biweekly premium contribution
- Low deductible of \$100 per person (up to \$200 per family, does not apply to office visits, urgent care, and prescription drugs)
- \$30 primary care office visit copay or \$40 for specialty
- Predictable copays

Standard Option

- \$0 copay for primary and specialty care office visits for children through age 17
- \$0 inpatient maternity care

High and Standard Options


- Acupuncture and chiropractic care covered at \$15 per visit up to 20 visits combined per year, without a referral, with any American Specialty Health (ASH) Plans of California, Inc., participating provider. To find a participating provider, visit ashlink.com/ash/kp or call **1-800-678-9133**, Monday through Friday, 5 a.m. to 6 p.m. For TTY, call **711**.





Which plan option is right for you?

1. Choose an option

High Option	Standard Option	Prosper 
<ul style="list-style-type: none"> No deductible Lowest copays for services and prescription drugs 	<ul style="list-style-type: none"> No deductible \$0 copay primary and specialty for children \$0 for inpatient maternity Great balance of low premiums and affordable copays 	<ul style="list-style-type: none"> Lower biweekly premium contribution Low deductible of \$100 per person (up to \$200 per family, does not apply to office visits, urgent care, and prescription drugs) Predictable copays
Best option if you:	Best option if you:	Best option if you:
<ul style="list-style-type: none"> Anticipate frequent care visits Want predictable and low out-of-pocket costs 	<ul style="list-style-type: none"> Want a lower premium and predictable out-of-pocket costs Have young children or plan to start a family 	<ul style="list-style-type: none"> Are in good overall health Want to pay the lowest premiums

2. Select the type of enrollment you want

- Self Only** covers you.
- Self Plus One** covers you and one eligible family member.
- Self and Family** covers you and all eligible family members.

3. Sign up online or call

Find your enrollment code in the chart on page 13. Then visit **opm.gov** to enroll online or contact your employing agency or retirement office for next steps and other information.

Annuitants can contact the Retirement Information Center at **1-888-767-6738** (TTY **1-855-887-4957**) or **retire@opm.gov**.

If you qualify for Medicare, or will soon, see page 14 for more information.



Changing your enrollment type

FEHB enrollees can make changes during Open Season. Outside Open Season, you may be able to change your enrollment if you experience a qualifying life event. To change enrollment types, you must change your enrollment by following Step 3 above.

These are highlights of the FEHB enrollment process. Please refer directly to opm.gov and your employing agency or retirement office for FEHB coverage effective dates, enrollment procedures and deadlines, and other information. To add an eligible family member to your Kaiser Permanente Self and Family enrollment, complete and return an Enrollment Change Form to us. These forms can be obtained at kp.org/feds or by calling Member Services.

Your 2022 benefits at a glance



Benefits and Services	High Option	Standard Option	Prosper
Deductible	None	None	\$100
Outpatient services			
Preventive care	\$0	\$0	\$0
Telehealth	\$0	\$0	\$0
Primary care office visit	\$15	\$30 (\$0 for children through age 17)	\$30
Specialty care office visit	\$25	\$40 (\$0 for children through age 17)	\$40
Lab tests	\$0	\$10	\$10*
X-rays	\$0	\$10	\$10*
Chiropractic and acupuncture services** – 20 combined visits per year	\$15	\$15	Not covered
Maternity			
Routine prenatal care and postpartum visit	\$0	\$0	\$0
Delivery	\$250	\$0	\$750*
Hospital services			
Outpatient surgery	\$50	\$200	\$300*
Inpatient hospital	\$250	\$500	\$750*
Emergency and urgent care			
Urgent care	\$15	\$30 (\$0 for children through age 17)	\$30
Emergency care	\$100	\$150	\$150*
Ambulance	\$50	\$150	\$200*
Prescription drugs			
Generic	\$10	\$15	\$15
Brand	\$40	\$50	\$60
Specialty	\$100	\$150	\$200
Out-of-pocket Maximum	\$2,000	\$3,000	\$5,000

*Deductible applies.

**Chiropractic and acupuncture services without a referral, with any American Specialty Health (ASH) Plans of California, Inc., participating provider. To find a participating provider, visit ashlink.com/ash/kp or call 1-800-678-9133, Monday through Friday, 5 a.m. to 6 p.m. For TTY, call 711.

Notes:

- Telehealth options include video, phone, email, and more. See page 6, Convenient ways to get what you need.
- Prescription drug copayments are for a 30-day supply at Kaiser Permanente pharmacies. You pay only 2 copays for up to a 100-day supply for most drugs through Kaiser Permanente's mail-order program.
- Deductible and out-of-pocket maximum amounts are per person, but no more than 2 times per family.

This is a summary of the features of the Kaiser Permanente – Southern California FEHB plan. Before making a final decision, please read the Plan's Federal brochure (RI 73-822). All benefits are subject to the definitions, limitations, and exclusions set forth in the Federal brochure.


Here's what you'll pay

These rates do not apply to all enrollees. If you are in a special enrollment category, please refer to the FEHB Program website or contact the agency or Tribal Employer that maintains your health benefits enrollment.

Your Premium Share	High Option	Standard Option	NEW Prosper	
Self Only	Biweekly	\$106.20	\$56.35	\$42.19
	Monthly	\$230.10	\$122.09	\$91.41
Self Plus One	Biweekly	\$286.74	\$130.22	\$97.03
	Monthly	\$621.27	\$282.15	\$210.24
Self and Family	Biweekly	\$237.24	\$130.22	\$118.12
	Monthly	\$514.02	\$282.15	\$255.94

Choose the right enrollment code

Enrollment Code	High Option	Standard Option	NEW Prosper
Self Only	621	624	FL1
Self Plus One	623	626	FL3
Self and Family	622	625	FL2

Self Plus One
 Enrollees covering themselves and one other eligible family member may choose either the Self Plus One or Self and Family enrollment type, whichever has a lower premium. You should decide which enrollment type is best for you.

Need help? Call **1-855-366-8994**, Monday through Friday, 7 a.m. to 5 p.m.
Open Season hours: Monday through Friday, 6 a.m. to 7 p.m. For TTY, call **711**.

Get more with a Kaiser Permanente Medicare health plan

Why choose a Kaiser Permanente Medicare health plan for FEHB members?

As a Kaiser Permanente member, you can enhance your FEHB benefits by enrolling in a Kaiser Permanente Senior Advantage for Federal Members (HMO) plan.¹⁰ You keep your FEHB coverage, but will pay lower copayments and get additional benefits.

You must have Part B to enroll in Senior Advantage. High and Standard Option members who enroll in Senior Advantage 2 will be reimbursed up to **\$3,000** per year (**\$250** per month) for the Medicare Part B premium. This covers what most people pay, including Late Enrollment Penalties (LEP) and Income Related Monthly Adjustment Amount (IRMAA).

New 2022 benefit highlights

High Option Senior Advantage 1

New benefits to help you thrive



New meal delivery

After an inpatient stay at a hospital or skilled nursing facility, you can get back to health more quickly with fresh and nutritious meal deliveries. This new benefit includes:

- 3 dietitian-designed meals a day for up to 4 weeks – a total of 84 meals
- Delivery to any address in coverage region
- More than 70 entrée options, including heart-healthy, diabetic-friendly, and gluten-free meals

Prosper Senior Advantage

New affordable Prosper Senior Advantage plan with better benefits and extras like eyewear allowance and Silver&Fit® fitness membership



New nonemergency transportation

Making it easier for you to get access to care and never miss an important medical appointment. Your new transportation benefit gives you up to 24 one-way rides to:

- Lab visits
- Doctor appointments
- Pick up medications or medical equipment

For a full list of benefit changes, refer to the FEHB plan brochure RI 73-822 and the Medicare Evidence of Coverage.



For more information on our Kaiser Permanente Medicare health plans, visit kp.org/feds.



What Senior Advantage plans are available to FEHB members?

As a Federal retiree, you can select the Senior Advantage plan that best fits your lifestyle no matter what plan option you're on.

If you are a High or Standard Option member, you have 2 great choices

By enrolling in Senior Advantage, you get the additional benefits summarized below. See the chart on pages 18-19 for details.

Senior Advantage 1	Senior Advantage 2
<ul style="list-style-type: none"> • Lower copayments for primary and specialty care office visit, outpatient surgery, inpatient hospital care, emergency care, urgent care, and brand-name prescription drugs • Up to a 100-day supply of most prescription drugs for 1 copay at Plan pharmacies or through mail order (High Option) • Eyewear allowance of \$200 (High Option) or \$150 (Standard Option) every 24 months • Dental coverage through DeltaCare® USA with no added premium • NEW meal delivery of 3 dietitian-designed meals a day for up to 4 weeks – a total of 84 meals – after an inpatient stay at a hospital or skilled nursing facility (High Option) • NEW nonemergency transportation to medical providers (up to 24 one-way rides) (High Option) 	<ul style="list-style-type: none"> • Up to \$3,000 reimbursement per year (\$250 per month) for the Medicare Part B premium you pay • Lower copayments for primary and specialty care office visits, emergency care, and urgent care • Lower copayments for inpatient hospital care, outpatient surgery, and brand-name prescription drugs (Standard Option) • \$500 allowance per ear for hearing aids every 36 months (High Option) • Membership in Silver&Fit® fitness program at no extra charge*

Prosper members get better benefits too

- **No deductible** and lower out-of-pocket maximum
- **\$100 allowance for eyewear** every 24 months
- **Lower copays** for specialty care office visits, outpatient surgery, inpatient hospital care, emergency care, ambulance, and brand and specialty prescription drugs
- **Membership in Silver&Fit®** fitness program at no extra charge*

*Silver&Fit® is a federally registered trademark of American Specialty Health, Inc.

Enrolling in Medicare

Here's what you need to know about enrollment periods and when you can sign up for Medicare.

Initial Enrollment Period



You can first sign up for Part A and/or Part B during the 7-month period that begins 3 months before the month you turn 65, includes the month you turn 65, and ends 3 months after the month you turn 65.

General Enrollment Period



If you don't sign up for Part B when you're first eligible, you can sign up between January 1 and March 31 each year, for a July 1 effective date. Your coverage won't start until July 1 of that year, and you may have to pay a higher Part B premium for late enrollment.

Special Enrollment Period (SEP)



If you continue to work past age 65 and you delayed your enrollment in Medicare Parts A and B, you can sign up during SEP. You have up to 8 months from the date you retired to enroll in Medicare Parts A and B to avoid a late enrollment penalty.



What's next?

To learn more about Medicare benefits and eligibility, call Social Security at **1-800-772-1213** (TTY **1-800-325-0778**), Monday through Friday, 8 a.m. to 7 p.m.

If you're ready to enroll in a Kaiser Permanente Medicare health plan for Federal Members, or have questions, call our Kaiser Permanente Medicare specialists at **1-877-297-0570** (TTY **711**), Monday through Friday, 8 a.m. to 8 p.m. We'll be happy to answer your questions and walk you through the enrollment process.

Senior Advantage (HMO) for Federal Members

Enrolling in Senior Advantage for Federal Members does not change your FEHB premium.

See page 13 for your premium share.

2022 Benefits and Services	High Option		
	Without Medicare	Senior Advantage 1	Senior Advantage 2
Deductible	None	None	None
Outpatient services			
Preventive care	\$0	\$0	\$0
Telehealth	\$0	\$0	\$0
Primary care office visit	\$15	\$5	\$10
Specialty care office visit	\$25	\$5	\$10
Most lab tests and X-rays	\$0	\$0	\$0
Chiropractic and acupuncture - 20 visits per year	\$15	\$15	\$15
Hospital services			
Outpatient surgery	\$50	\$5	\$50
Inpatient hospital	\$250	\$0	\$250
Emergency and urgent care			
Urgent care	\$15	\$5	\$10
Emergency care	\$100	\$75	\$75
Ambulance	\$50	\$50	\$50
Prescription drugs**			
Generic	\$10	\$10	\$10
Brand	\$40	\$30	\$40
Specialty	\$100	\$100	\$100
Additional Senior Advantage benefits			
Eyewear allowance (every 24 months)	Not covered	\$200	Not covered
Dental	Not covered	Included	Not covered
Fitness membership	Not covered	Not covered	Silver&Fit®
Nonemergency transportation and meal delivery	Not covered	Included	Not covered
Hearing aid allowance for adults (per ear, every 36 months)	Not covered	Not covered	\$500
Part B reimbursement	None	None	Up to \$250 per month
Out-of-pocket Maximum	\$2,000	\$2,000	\$2,000

*Deductible applies.

Plan providers determine the drug that is medically necessary. If you request another drug, you pay prices charged to members for non-covered drugs. Some drugs may not be eligible for mail-order delivery or mail-order discounts. For certain drugs, you can get prescription refills mailed to you through our Kaiser Permanente mail-order pharmacy. You should receive them within 3-5 days. If not, please call **1-866-206-2983 (TTY 711).

Notes:

- Telehealth options include video, phone, email, and more. See page 6, Convenient ways to get what you need.

Standard Option			Prosper	
Without Medicare	Senior Advantage 1	Senior Advantage 2	Without Medicare	Senior Advantage
None	None	None	\$100	None
\$0	\$0	\$0	\$0	\$0
\$0	\$0	\$0	\$0	\$0
\$30 (\$0 for children through age 17)	\$15 (\$0 for children through age 17)	\$20 (\$0 for children through age 17)	\$30	\$25
\$40 (\$0 for children through age 17)	\$15 (\$0 for children through age 17)	\$30 (\$0 for children through age 17)	\$40	\$35
\$10	\$10	\$10	\$10*	\$10
\$15	\$15	\$15	Not covered	Not covered
\$200	\$15	\$150	\$300*	\$200
\$500	\$250	\$350	\$750*	\$500
\$30 (\$0 for children through age 17)	\$15 (\$0 for children through age 17)	\$20 (\$0 for children through age 17)	\$30	\$25
\$150	\$75	\$100	\$150*	\$100
\$150	\$125	\$150	\$200*	\$175
\$15	\$10	\$15	\$15	\$15
\$50	\$40	\$45	\$60	\$47
\$150	\$150	\$150	\$200	\$175
Not covered	\$150	Not covered	Not covered	\$100
Not covered	Included	Not covered	Not covered	Not covered
Not covered	Not covered	Silver&Fit®	Not covered	Silver&Fit®
Not covered	Not covered	Not covered	Not covered	Not covered
Not covered	Not covered	Not covered	Not covered	Not covered
None	None	Up to \$250 per month	None	None
\$3,000	\$2,000	\$2,500	\$5,000	\$3,000

• Copayments are for a 30-day supply, or 100-day supply for High Option Senior Advantage 1, at Kaiser Permanente pharmacies. You pay only 2 copays for up to a 100-day supply for most drugs through Kaiser Permanente's mail-order program.

• Deductible and out-of-pocket maximum amounts are per person, but no more than 2 times per family.

• Silver&Fit® is a federally registered trademark of American Specialty Health, Inc.

This is a summary of the features of the Kaiser Permanente health plan, including Kaiser Permanente Senior Advantage for Federal Members. Before making a final decision, please read the Federal Employees Health Benefits (FEHB) brochure RI 73-822. All benefits are subject to the definitions, limitations, and exclusions set forth in the FEHB brochure and the Kaiser Permanente Senior Advantage for Federal Members Evidence of Coverage.

Quality vision and dental coverage⁹

When you join Kaiser Permanente, you get additional discounts and services.



Eyewear

High Option members get a 25% discount on eyeglasses and contact lenses at Vision Essentials by Kaiser Permanente Optical Centers.



Dental coverage

You can choose from 2 dental plans to supplement your health coverage:

- Kaiser Permanente Insurance Company (KPIC) administered by Delta Dental of California. With this plan you have the freedom to see any licensed dentist you choose.
- DeltaCare[®] USA administered by Delta Dental. You'll choose a dentist from the DeltaCare USA network with this HMO plan.

Current members can call KPIC Dental Insurance Plan at **1-800-835-2244** (group number 09874) or DeltaCare USA at **1-800-422-4234** (group number 71114). You can also view dental plans and enrollment materials at kp.org/feds. New dental member? Call us at **1-800-933-9312** for more information. Rates are listed below.

2022 Dental Rates	KPIC		DeltaCare USA	
	Monthly	Monthly	Monthly	Quarterly
Self Only	\$35.38	\$14.26	\$14.26	\$42.77
Self + 1	\$62.71	\$23.87	\$23.87	\$71.60
Self + 2 or more	\$94.26	\$36.18	\$36.18	\$108.53



Locations near you

Now open:

Playa Vista Medical Offices
 Clairemont Mesa Medical Offices
 Hesperia Medical Offices

Coming soon:

Cancer Care Center at Los Angeles
 Medical Center (Q4 2021)

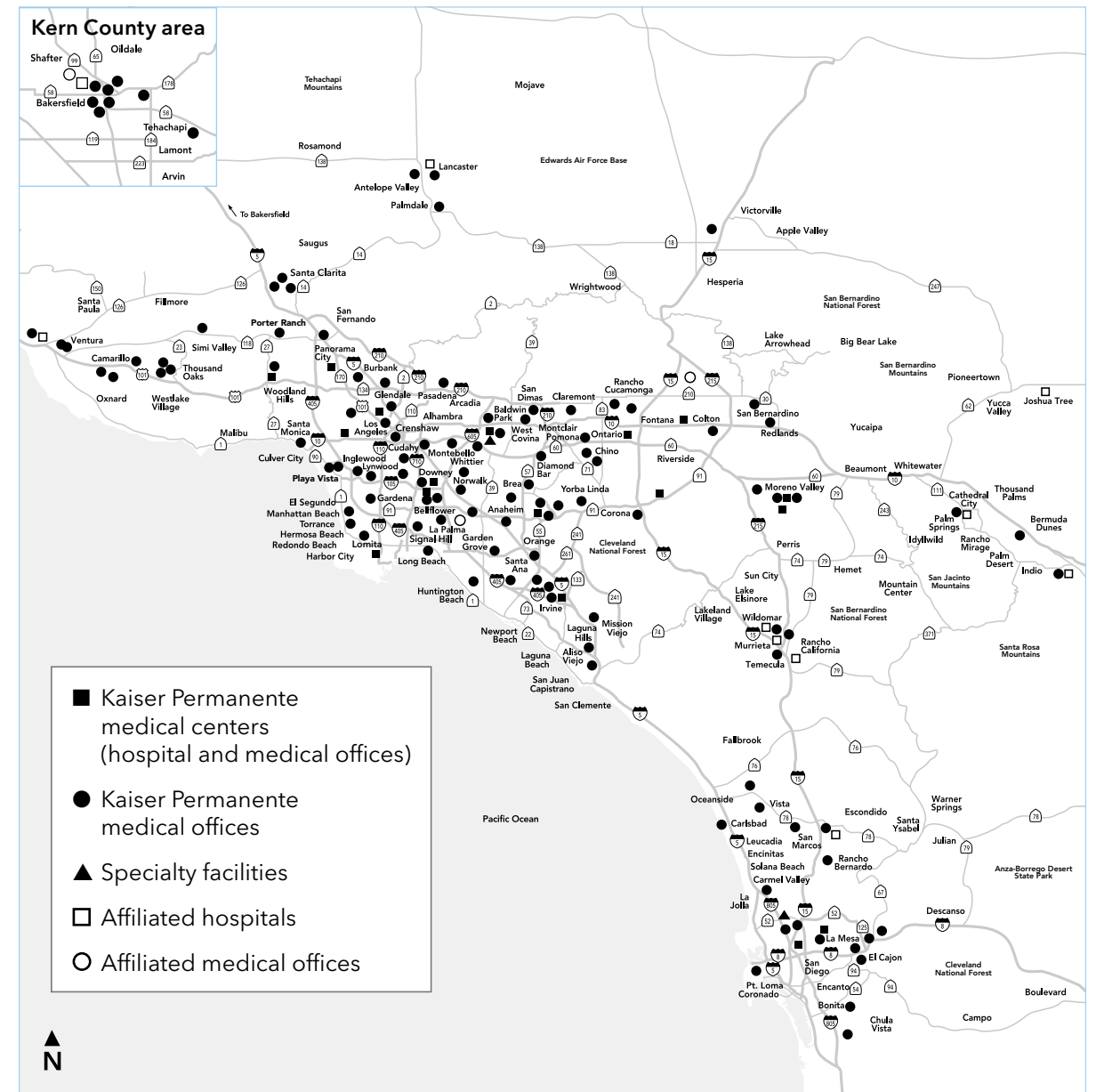
New Watts Medical Offices and
 Remodeled Learning and Counseling
 Center (Q1 2023)

Opening This Year:

Kaiser Permanente Cancer Center at Los Angeles Medical Center (Metropolitan Los Angeles Service Area) – This fall, members will have improved access to Kaiser Permanente's innovative cancer care and treatment in one convenient location. Designed with patient comfort in mind, the new facility will offer many new features to promote healing and high quality, compassionate care.



Clairemont Mesa Medical Offices, San Diego



Maps not to scale



Finding the right location

Choosing a convenient place to get care is simple – just hop online or grab your smartphone.

- Visit [kp.org/facilities](https://www.kp.org/facilities) to search by ZIP code, keyword, or the type of service you need.
- Search on your smartphone with the location finder on the Kaiser Permanente mobile app.¹¹

City	Facility	Address
Kern County		
Bakersfield	● Central Medical Offices	3733 San Dimas St.
	● Chester Avenue Medical Offices	2531 Chester Ave.
	● Chester Avenue Medical Offices II	2620 Chester Ave.
	● Coffee Road Medical Offices	4801 Coffee Rd.
	● Discovery Plaza Medical and Administrative Offices	1200 Discovery Dr.
	● East Hills Medical Offices	3700 Mall View Rd.
	● Ming Medical Offices	8800 Ming Ave.
	☐ San Joaquin Community Hospital – Emergency services*	2615 Chester Ave.
	● Stockdale Medical Offices	3501 Stockdale Hwy.
	Tehachapi	● Tehachapi Medical Offices
Los Angeles County		
Baldwin Park	■ Baldwin Park Medical Center	1011 Baldwin Park Blvd.
Bellflower	● Bellflower Medical Offices	9400 E. Rosecrans Ave.
	● Rosecrans Medical Offices	9333 E. Rosecrans Ave.
Carson	● Carson Medical Offices	18600 S. Figueroa St.
Cerritos	● Cerritos Medical Offices	10820 E. 183rd St.
City of Industry	● Crossroads Medical Offices	12801 Crossroads Pkwy. S.
Claremont	● Claremont Mesa Medical Offices	6911 Convoy Ct.
	● Indian Hill Medical Offices	250 W. San Jose St.
Cudahy	● Cudahy Medical Offices	7825 Atlantic Ave.
Culver City	● Playa Vista Medical Offices	5620 Mesmer Ave.
Diamond Bar	● Diamond Bar Medical Offices	1336 Bridgegate Dr.
Downey	■ Downey Medical Center	9333 E. Imperial Hwy.
	● Garden Medical Offices	9353 E. Imperial Hwy.
	● Orchard Medical Offices	9449 E. Imperial Hwy.
Gardena	● Gardena Medical Offices	15446 S. Western Ave.
Glendale	● Glendale Medical Offices	444 W. Glenoaks Blvd.
	● Glendale Orange Street Medical Offices	501 N. Orange St.
Harbor City	● Coastline Medical Office	25821 Vermont Ave.
	● Normandie North Medical Office	25965 Normandie Ave.
	● Normandie South Medical Office	25975 Normandie Ave.
	● Parkview Medical Office	1050 West Pacific Coast Hwy.
	■ South Bay Medical Center	25825 S. Vermont Ave.

*Affiliated plan facilities provide selected inpatient and/or outpatient hospital and emergency services.

■ Kaiser Permanente medical centers (hospital and medical offices) ● Kaiser Permanente medical offices ☐ Affiliated plan hospitals (hospital and medical offices) ▲ Specialty facilities ○ Affiliated medical offices

City	Facility	Address
Inglewood	● Inglewood Medical Offices	110 N. La Brea Ave.
Irwindale	● Irwindale Medical Offices	12761 Schabarum Ave.
Lancaster	☐ Antelope Valley Hospital – Emergency services*	1600 W. Avenue J
	● Antelope Valley Medical Offices	615 W. Avenue L
	● Lancaster Medical Offices	43112 N. 15th St. W.
	● Women's Health Office (Ob-Gyn)	44105 15th St. W.
Lomita	● Lomita Medical Offices	2081 Palos Verdes Dr.
Long Beach	● Long Beach Medical Offices	3900 E. Pacific Coast Hwy.
Los Angeles	● Baldwin Hills–Crenshaw Medical Offices	3782 W. Martin Luther King Jr. Blvd.
	● Culver Marina Medical Offices	12001 W. Washington Blvd.
	● Downtown Los Angeles Hope Street Medical Offices	333 S. Hope St.
	● East Los Angeles Medical Offices	5119 E. Pomona Blvd.
	● Hollywood Romaine Medical Offices	7007 Romaine St., 4th - 6th Floors
	■ Los Angeles Medical Center	4867 W. Sunset Blvd.
	● Playa Vista Medical Offices	5300 McConnell Ave.
	● South Los Angeles Medical Offices	1550 W. Manchester Ave.
	■ West Los Angeles Medical Center	6041 Cadillac Ave.
Lynwood	● Lynwood Medical Offices	3830 Martin Luther King Jr. Blvd.
Manhattan Beach	● Manhattan Beach Medical Offices	400 S. Sepulveda Blvd.
Mission Hills	● Mission Hills Medical Offices	11001 Sepulveda Blvd.
Montebello	● Montebello Medical Offices	1550 Town Center Dr.
North Hollywood	● North Hollywood Medical Offices	5250 Lankershim Blvd.
Norwalk	● Norwalk Medical Offices	12501 E. Imperial Hwy.
Palmdale	● Palmdale Medical Offices	4502 E. Avenue S
Panorama City	■ Panorama City Medical Center	13651 Willard St.
Pasadena	● Pasadena Medical Offices	3280 E. Foothill Blvd.
Porter Ranch	● Porter Ranch Medical Offices	20000 Rinaldi St.
San Dimas	● San Dimas Medical Offices	1255 W. Arrow Hwy.
Santa Clarita	● Canyon Country Medical Offices	26415 Carl Boyer Dr.
	● Santa Clarita Medical Offices	27107 Tourney Rd.
	● Santa Clarita Medical Offices 2	26877 Tourney Rd.
Santa Monica	● Santa Monica Medical Offices	1450 10th St., 2nd Floor
Signal Hill	● Signal Hill Medical Offices	845 E. Willow St.
Torrance	● Torrance Medical Offices	20790 Madrona Ave.
West Covina	● West Covina Medical Offices	1249 S. Sunset Ave.
Whittier	● Whittier Medical Offices	12470 E. Whittier Blvd.
Woodland Hills	● Erwin Street Medical Offices	21263 Erwin St.
	■ Woodland Hills Medical Center	5601 De Soto Ave.

City	Facility	Address
Orange County		
Aliso Viejo	● Aliso Viejo Medical Offices	24502 Pacific Park Dr.
Anaheim	● Anaheim Hills Medical Offices	5475 E. La Palma Ave., Ste. 201
	● Anaheim Kraemer Medical Offices	3430 E. La Palma Ave., Building 2 3460 E. La Palma Ave., Building 1
	● Euclid Medical Offices	1188 N. Euclid St.
	● Lakeview Medical Offices	411 N. Lakeview Ave.
	■ Orange County-Anaheim Medical Center	3440 E. La Palma Ave.
Brea	● Brea Medical Offices	1900 E. Lambert Rd.
Foothill Ranch	● Foothill Ranch Medical Offices	26882 Towne Centre Dr.
Fullerton	○ West Fullerton Target Clinic (care provided by Kaiser Permanente)	1893 W. Malvern Ave.
Garden Grove	● Garden Grove Medical Offices	12100 Euclid St.
Huntington Beach	● Huntington Beach Medical Offices	18081 Beach Blvd.
Irvine	● Alton/Sand Canyon Medical Offices	6650 Alton Pkwy. 6670 Alton Pkwy.
	● Barranca Medical Offices	6 Willard
	■ Orange County-Irvine Medical Center	6640 Alton Pkwy.
La Habra	● La Habra Medical Offices	601 E. Imperial Hwy.
La Palma	● La Palma Medical Offices	5 Centerpointe Dr.
Mission Viejo	● Mission Viejo Medical Offices	23781 Maquina Ave.
San Juan Capistrano	● San Juan Capistrano Medical Offices	30400 Camino Capistrano
Santa Ana	● Harbor-MacArthur Medical Offices	3401 S. Harbor Blvd.
	● Santa Ana Medical Offices	1900 E. 4th St.
Tustin	● Tustin Ranch Medical Offices	2521 Michelle Dr.
Yorba Linda	● Yorba Linda Medical Offices	22550 Savi Ranch Pkwy.
Riverside County		
Corona	● Corona Medical Offices	2055 Kellogg Ave.
Indio	● Kaiser Permanente Indio Medical Offices	46-900 Monroe St.
	□ John F. Kennedy Memorial Hospital – Emergency services*	47111 Monroe St.
Moreno Valley	● Heacock Medical Offices	12815 Heacock St.
	■ Moreno Valley Medical Center	27300 Iris Ave.
	● Moreno Valley Medical Center – Medical Office Building 2	27200 Iris Ave.
Murrieta	● Murrieta Medical Offices	28150 Keller Rd.
	□ Rancho Springs Medical Center	25500 Medical Center Dr.

*Affiliated plan facilities provide selected inpatient and/or outpatient hospital and emergency services.

■ Kaiser Permanente medical centers (hospital and medical offices) ● Kaiser Permanente medical offices □ Affiliated plan hospitals (hospital and medical offices) ▲ Specialty facilities ○ Affiliated medical offices

City	Facility	Address
Palm Desert	● Kaiser Permanente Palm Desert Medical Offices	75036 Gerald Ford Dr.
Palm Springs	□ Desert Regional Medical Center – Emergency services*	1150 N. Indian Canyon Dr.
	● Kaiser Permanente Palm Springs Medical Offices	1100 N. Palm Canyon Dr., Ste. 208
Riverside	● Meridian Medical Offices	14305 Meridian Pkwy.
	■ Riverside Medical Center	10800 Magnolia Ave.
Temecula	● Temecula Medical Offices	27309 Madison Ave.
	□ Temecula Valley Hospital	31700 Temecula Pkwy.
Wildomar	□ Inland Valley Medical Center	36485 Inland Valley Dr.
	● Wildomar Medical Offices	36450 Inland Valley Dr.
San Bernardino County		
Chino	● Chino Medical Offices	11911 Central Ave.
	● Chino Grand Medical Offices	3750-70 Grand Ave.
Colton	● Colton Medical Offices	789 E. Cooley Dr.
Fontana	■ Fontana Medical Center	9961 Sierra Ave.
	○ Fontana North Target Clinic (care provided by Kaiser Permanente)	15272 Summit Ave.
Hesperia	● Hesperia Medical Offices	9550 Escondido Ave.
Joshua Tree	□ Hi-Desert Medical Center – Emergency services*	6601 White Feather Rd.
Ontario	■ Ontario Medical Center	2295 S. Vineyard Ave.
Rancho Cucamonga	● Rancho Cucamonga Medical Offices	10850 Arrow Rte.
Redlands	● Redlands Medical Offices	1301 California St.
San Bernardino	● San Bernardino Medical Offices	1717 Date Pl.
Upland	● Upland Medical Offices	1183 E. Foothill Blvd.
Victorville	● Victorville Medical Offices	14011 Park Ave.
San Diego County		
Bonita	● Bonita Medical Offices	3955 Bonita Rd.
Carlsbad	● Carlsbad Medical Offices	6860 Avenida Encinas
Clairemont Mesa	● Clairemont Mesa Medical Offices	6911 Convoy Ct.
El Cajon	● Bostonia Medical Offices	1630 E. Main St.
	● El Cajon Medical Offices	250 Travelodge Dr.
Escondido	● Escondido Medical Offices	732 N. Broadway
	□ Palomar Medical Center – Emergency services*	2185 Citracado Pkwy.
La Mesa	● La Mesa Medical Offices	8080 Parkway Dr.
	● Rancho San Diego Medical Offices	3875 Avocado Blvd.

City	Facility	Address
Oceanside	● Oceanside Medical Offices	1302 Rocky Point Dr.
San Diego	● Carmel Valley Medical Offices	3851 Shaw Ridge Rd.
	● Clairemont Mesa Medical Offices	6911 Convoy Ct.
	▲ Garfield Specialty Center	5893 Copley Dr.
	● Otay Mesa Medical Offices	4650 Palm Ave. 4660 Palm Ave.
	● Point Loma Medical Offices	3250 Fordham St. 3420 Kenyon St.
	● Rancho Bernardo Medical Offices	17140 Bernardo Center Dr.
	■ San Diego Medical Center	9455 Clairemont Mesa Blvd.
	○ San Diego Mission Valley Target Clinic (care provided by Kaiser Permanente)	1288 Camino Del Rio N.
	● Vandever Medical Offices	4405 Vandever Ave.
San Marcos	● Viewridge Medical Offices	5251 Viewridge Ct.
	■ Zion Medical Center	4647 Zion Ave.
	● San Marcos Medical Offices	400 Craven Rd.
Vista	● Vista Medical Offices	780 Shadowridge Dr.
	○ Vista Target Clinic (care provided by Kaiser Permanente)	1751 University Dr.
Ventura County		
Camarillo	● Camarillo Medical Offices	2620 E. Las Posas Rd.
Oxnard	● Oxnard 2103 East Gonzales Road Medical Offices	2103 E. Gonzales Rd.
	● Oxnard 2200 East Gonzales Road Medical Offices	2200 E. Gonzales Rd.
Simi Valley	● Simi Valley Medical Offices	3900 Alamo St.
Thousand Oaks	● 145 Hodencamp Road Medical Offices	145 Hodencamp Rd.
	● 322 East Thousand Oaks Blvd Medical Offices	322 E. Thousand Oaks Blvd.
	● 365 E. Hillcrest Drive Medical Offices	365 E. Hillcrest Dr.
Ventura	☐ Community Memorial Hospital of San Buenaventura – Emergency services*	147 N. Brent St.
	● Market Street Medical Offices	4949 Market St.
	● Ventura 888 South Hill Rd Medical Offices	888 South Hill Rd.
	● Ventura 1000 South Hill Rd Medical Offices	1000 South Hill Rd.

Notes

*Affiliated plan facilities provide selected inpatient and/or outpatient hospital and emergency services.

- Kaiser Permanente medical centers (hospital and medical offices)
- Kaiser Permanente medical offices
- ▲ Specialty facilities
- ☐ Affiliated plan hospitals
- Affiliated medical offices

Notes

Lined area for notes on page 30.

1. When appropriate and available. If you travel out of state, phone appointments and video visits may not be available due to state laws that may prevent doctors from providing care across state lines. Laws differ by state. 2. In the case of a pandemic, some facilities may be closed or offer limited hours and services. 3. Available on most prescription orders; additional fees may apply. For more information, contact the pharmacy. 4. High deductible health plans may require a copay or coinsurance for phone appointments and video visits. 5. Source: Kaiser Permanente Telehealth Insights Dashboard. 6. Kaiser Permanente 2020 HEDIS® scores. Benchmarks provided by the National Committee for Quality Assurance (NCQA) Quality Compass® and represent all lines of business. Kaiser Permanente combined region scores were provided by the Kaiser Permanente Department of Care and Service Quality. The source for data contained in this publication is Quality Compass 2020 and is used with the permission of NCQA. Quality Compass 2020 includes certain CAHPS data. Any data display, analysis, interpretation, or conclusion based on these data is solely that of the authors, and NCQA specifically disclaims responsibility for any such display, analysis, interpretation, or conclusion. Quality Compass® and HEDIS® are registered trademarks of NCQA. CAHPS® is a registered trademark of the Agency for Healthcare Research and Quality. 7. We will send you a Kaiser Permanente health payment card 4 to 6 weeks after you complete your first activity. We will load rewards when you complete activities, so keep the card until it expires. Rewards you earn during a plan year can be used to pay for qualified medical expenses through March 31 of the following year. Go to kp.org/feds to learn more and get started. 8. These services aren't covered under your health plan benefits and aren't subject to the terms set forth in your Evidence of Coverage or other plan documents. These services may be discontinued at any time without notice. 9. These benefits are neither offered nor guaranteed under contract with the FEHB Program, but are made available to all enrollees and family members who become members of Kaiser Permanente. 10. Includes Medicare Parts A, B, and D in a single plan. 11. To use the Kaiser Permanente app, you must be a Kaiser Permanente member registered on kp.org.

This is a summary of the features of the Kaiser Permanente health plan. Before making a final decision, please read the plan's Federal brochure (RI 73-822). All benefits are subject to the definitions, limitations, and exclusions set forth in the Federal brochure. The services listed on page 8 ("Healthy resources") and on page 20 (eyewear and dental coverage) are neither offered nor guaranteed under contract with the FEHB Program, but are made available to all enrollees and family members who become members of Kaiser Permanente. This plan's RI brochure is available on the internet at kp.org/feds. A paper copy is also available, at no charge, by calling **1-800-464-4000**, 24 hours a day, 7 days a week (closed holidays). For TTY, call **711**.

Notice of Summary of Benefits and Coverage (SBC): Availability of Summary Health Information The Federal Employees Health Benefits (FEHB) Program offers numerous health benefits plans and coverage options. Choosing a health plan and coverage option is an important decision. To help you make an informed choice, each FEHB plan makes available a Summary of Benefits and Coverage (SBC) about each of its health coverage options, online and in paper. The SBC summarizes important information in a standard format to help you compare plans and options. This plan's SBC is available on the internet at kp.org/feds. A paper copy is also available, at no charge, by calling **1-800-464-4000**, 24 hours a day, 7 days a week (closed holidays). For TTY, call **711**. To find out more information about plans available under the FEHB Program, including SBCs for other FEHB plans, please visit opm.gov/insure.

Kaiser Permanente is an HMO plan with a Medicare contract. Enrollment in Kaiser Permanente depends on contract renewal. To join a Kaiser Permanente Medicare health plan, you must reside in the Kaiser Permanente Medicare health plan service area in which you enroll. Enrolling in a Kaiser Permanente Medicare health plan for Federal Members will not affect the benefits you receive through the Federal Employees Health Benefits (FEHB) Program, although the network and other rules of Medicare may apply. FEHB Program coverage is described in FEHB brochure RI 73-822. You can enroll in Kaiser Permanente Medicare health plan for Federal Members if you have Medicare Part B and are an FEHB Kaiser Permanente member.

Let us help you find your healthy place

Having a good health plan is important for peace of mind. So is getting quality care. With Kaiser Permanente, you get both.

Care is just a click away with convenient online tools

Already a member?

Manage your care online anytime at kp.org. If you haven't already, go to kp.org/registernow so you can start emailing your doctor's office with nonurgent questions, schedule routine appointments, order most prescription refills, and more.

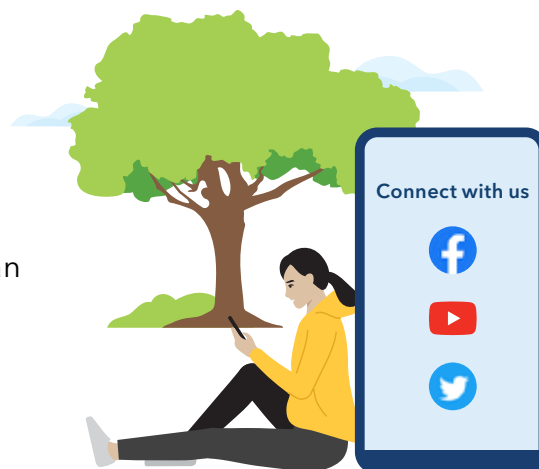
Not a member yet?

For more information, visit kp.org/feds or call **1-855-366-8994**, Monday through Friday, 7 a.m. to 5 p.m.

Open Season hours: Monday through Friday, 6 a.m. to 7 p.m.

Once you join ...

Visit kp.org/newmember to get started. It's easy to register at kp.org, choose your doctor, transfer your prescriptions, and schedule your first routine appointment. And if you need help, just give us a call.



Care near where you live and work

You're free to see different doctors at different locations. Browse your convenient care options at kp.org/facilities.

Kaiser Permanente health plans around the country: Kaiser Foundation Health Plan, Inc., in Northern and Southern California and Hawaii • Kaiser Foundation Health Plan of Colorado • Kaiser Foundation Health Plan of Georgia, Inc., Nine Piedmont Center, 3495 Piedmont Road NE, Atlanta, GA 30305, 404-364-7000 • Kaiser Foundation Health Plan of the Mid-Atlantic States, Inc., in Maryland, Virginia, and Washington, D.C., 2101 E. Jefferson St., Rockville, MD 20852 • Kaiser Foundation Health Plan of the Northwest, 500 NE Multnomah St., Suite 100, Portland, OR 97232 • Kaiser Foundation Health Plan of Washington or Kaiser Foundation Health Plan of Washington Options, Inc., 1300 SW 27th St., Renton, WA 98057